

# FERNSTEUERUNGSKÄSTEN - SERIE RCP

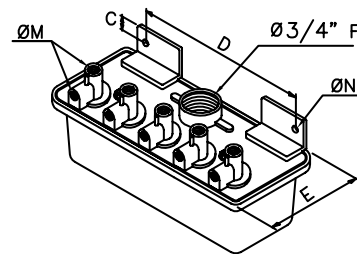
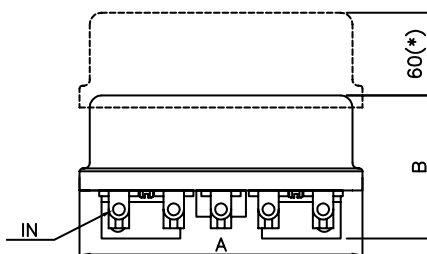


## MERKMALE

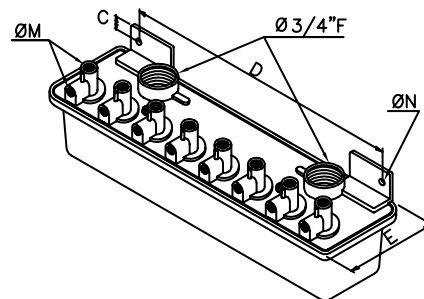
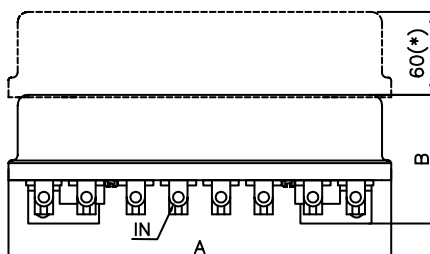
|                                       |                               |
|---------------------------------------|-------------------------------|
| Fluide                                | Schmiermittelfreie Filterluft |
| Betriebsdruck                         | von 0,5 bar bis max. 7,5 bar  |
| Betriebstemperatur<br>mit Heizelement | -20°C; +80°C<br>-40°C +80°C   |
| Deckel und Sockel                     | Aluminiumdruckguss            |
| Pilot-Kern                            | Edelstahl                     |
| Schrauben                             | Edelstahl                     |
| Spulen-Isolierung                     | Klasse H                      |
| Schutz                                | IP66                          |
| Standardspannungen                    | 230 -110 - 24V                |
|                                       | 50-60 Hz 19 VA                |
|                                       | 24VDC 15W                     |
| Höchstabstand Ventil                  | 3 Meter                       |

(\*) Raum, um die Öffnung des Deckels zu ermöglichen

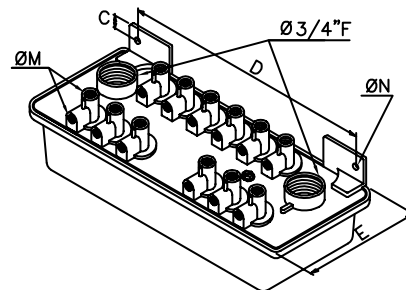
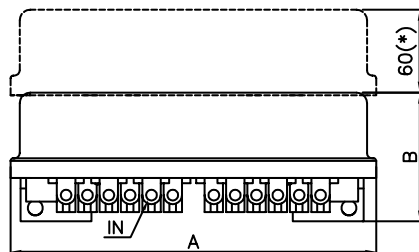
## RCP5



## RCP8



## RCP12



| MODELL | A   | B  | C  | D   | E   | ØM   | ØN | Gewicht (kg) |
|--------|-----|----|----|-----|-----|------|----|--------------|
| RCP5   | 210 | 98 | 10 | 156 | 100 | 1/8" | 11 | 1,7          |
| RCP8   | 333 | 98 | 10 | 267 | 100 | 1/8" | 11 | 3,2          |
| RCP12  | 306 | 97 | 10 | 237 | 152 | 1/8" | 11 | 4,4          |