

VALVOLE PER SUPERFICI PIANE - SERIE TS SERIES - Ø 1 1/2"

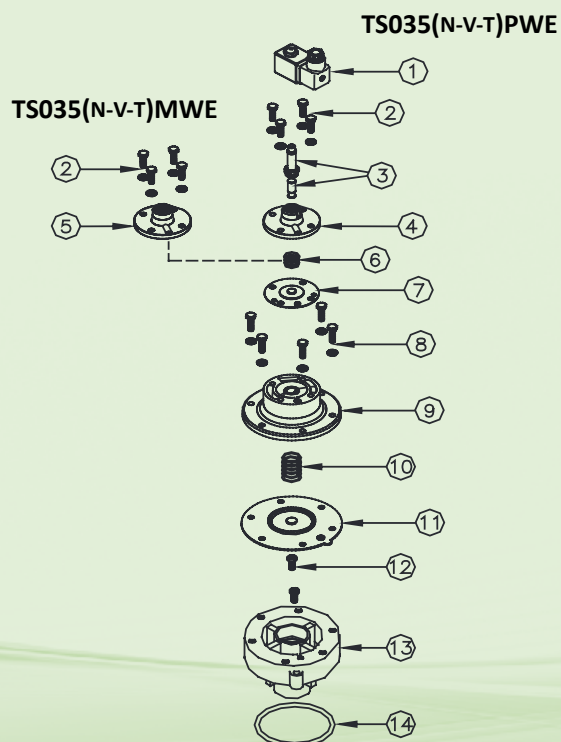
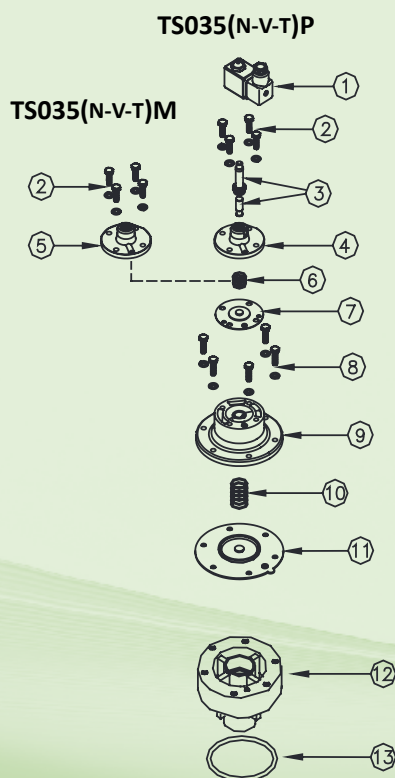


CARATTERISTICHE

Fluidi	Aria filtrata non lubrificata
Temperatura esercizio	Membrana neoprene -20°C; +80°C Membrana viton -20°C; +200°C Membrana bassa T. -40°C; +80°C
Pressione esercizio	da 0,5 bar a 7,5 bar max
Corpo e coperchio	Alluminio pressofuso
Nucleo pilota	Acciaio inox
Viteria	Acciaio inox
Isolamento bobina	Classe H
Connettore	PG 9 EN175301-803
Protezione connettore + bobina	IP65 EN60529
Tensioni standard	24V/50-60Hz (±10%) 19VA 115V/50-60Hz (±10%) 19VA 230V/50-60Hz (±10%) 19VA 24VDC (± 10%) 18 Watt

DESCRIZIONE	TS035(N-V-T)P / TS035(N-V-T)M
1 Bobina - Connettore	BH10 V## / V##
2 Viti - Rondelle	TKITVTE06X18X4
3 Gruppo pilota	1331080
4 Coperchio pilota	1251720
5 Coperchio remoto	1251740
6 Molla membrana	3241006
7 Membrana secondaria (N-V-T)	TKISM010N Neoprene TKISM010V Viton TKISM010T Bassa temperatura
8 Viti - Rondelle	TKITVTE06X20X6
9 Coperchio	1251810
10 Molla membrana	3241018
11 Membrana primaria (N-V-T)	TKISM035N Neoprene TKISM035V Viton TKISM035T Bassa temperatura
12 Corpo valvola	1251350
13 Guarnizione O-R	3301276

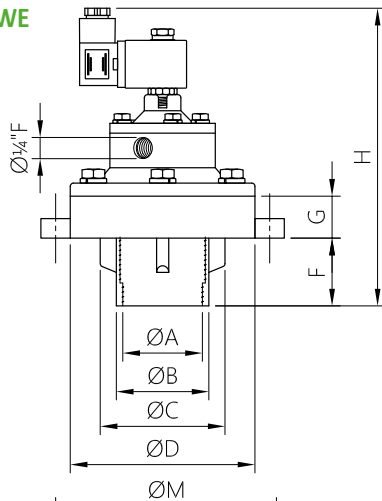
DESCRIZIONE	TS035(N-V-T)PWE / TS035(N-V-T)MWE
1 Bobina - Connettore	BH10 V## / V##
2 Viti - Rondelle	TKITVTE06X18X4
3 Gruppo pilota	1331080
4 Coperchio pilota	1251720
5 Coperchio remoto	1251740
6 Molla membrana	3241006
7 Membrana secondaria (N-V-T)	TKISM010N Neoprene TKISM010V Viton TKISM010T Bassa temperatura
8 Viti - Rondelle	TKITVTE06X20X6
9 Coperchio	1251810
10 Molla membrana	3241018
11 Membrana primaria (N-V-T)	TKISM035N Neoprene TKISM035V Viton TKISM035T Bassa temperatura
12 Viti - Rondelle	TKITVTE08X20X2
13 Corpo valvola	1251370
14 Guarnizione O-R	3301276



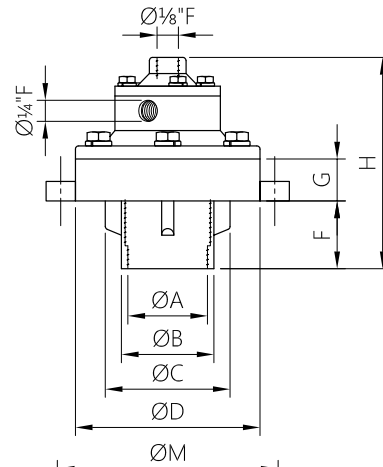
SERIE TS - Ø 1 ½" - DIMENSIONI D'INGOMBRO

**VALVOLE A MEMBRANA
PER SUPERFICI PIANE**

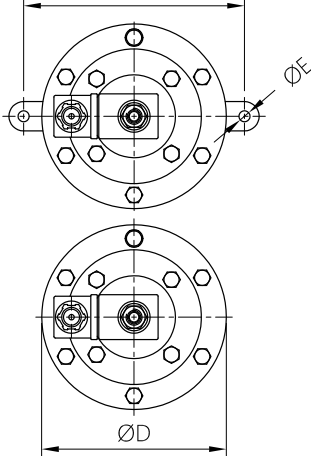
TS035(N-V-T)PWE



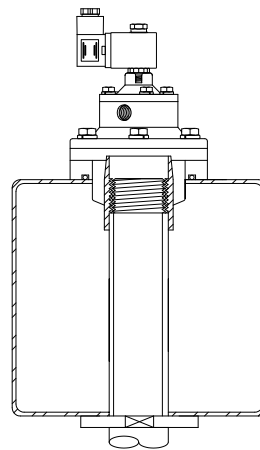
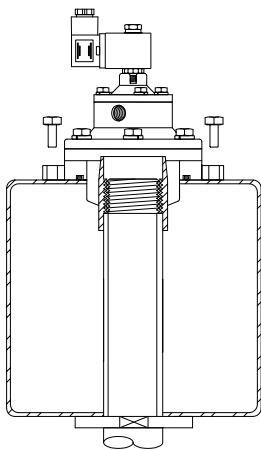
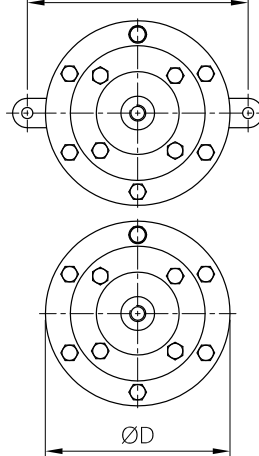
TS035(N-V-T)MWE



TS035(N-V-T)P



TS035(N-V-T)M



MODELLO	ØA	ØB	ØC	ØD	ØE	F	G	H	M	Peso (kg)
TS035(N-V-T)PWE	1 ½"	57	80.5	114	9	42	26	190	-	1.6
TS035(N-V-T)P	1 ½"	57	80.5	114	9	42	26	190	130	1.6
TS035(N-V-T)MWE	1 ½"	57	80.5	114	9	42	26	135	-	1.4
TS035(N-V-T)M	1 ½"	57	80.5	114	9	42	26	135	130	1.4