

VALVOLE PER SUPERFICI PIANE - SERIE TS - Ø 1 ½"



CARATTERISTICHE

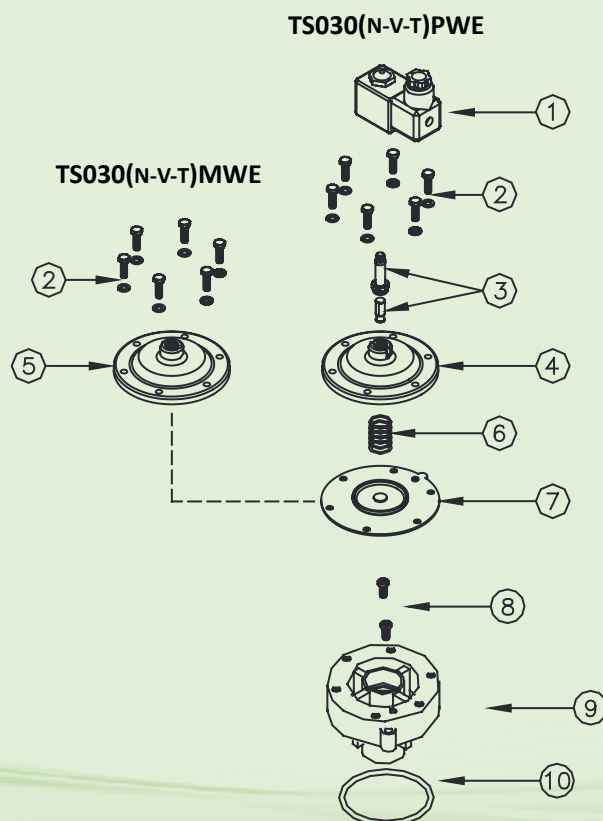
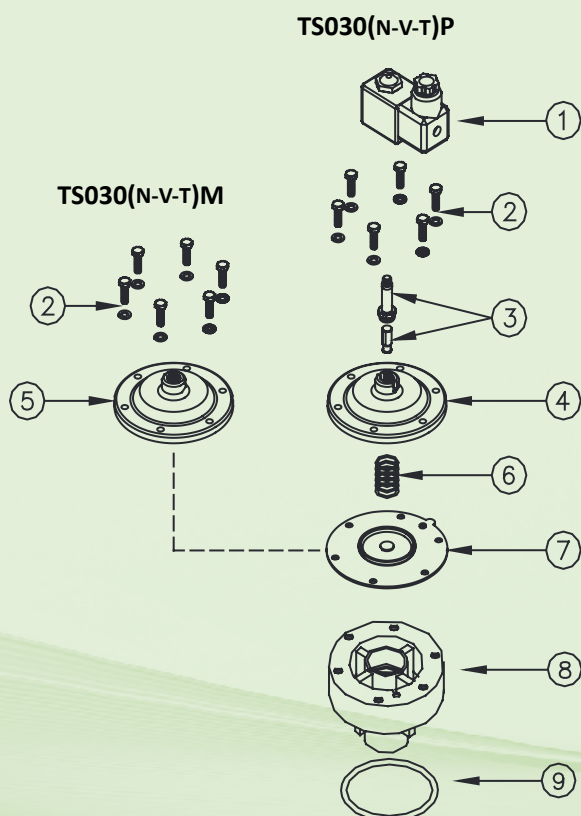
Fluidi	Aria filtrata non lubrificata
Temperatura esercizio	Membrana neoprene -20°C; +80°C Membrana viton -20°C; +200°C Membrana bassa T. -40°C; +80°C
Pressione esercizio	da 0,5 bar a 7,5 bar max
Corpo e coperchio	Alluminio pressofuso
Nucleo pilota	Acciaio inox
Viteria	Acciaio inox
Isolamento bobina	Classe H
Connettore	PG 9 EN175301-803
Protezione connettore + bobina	IP65 EN60529
Tensioni standard	24V/50-60Hz (±10%) 19VA 115V/50-60Hz (±10%) 19VA 230V/50-60Hz (±10%) 19VA 24VDC (± 10%) 18 Watt

DESCRIZIONE TS030(N-V-T)P / TS030(N-V-T)M

1	Bobina - Connettore	BH10 V## / V##
2	Viti - Rondelle	TKITVTE06X20X6
3	Gruppo pilota	1331080
4	Coperchio pilota	1251802
5	Coperchio remoto	1251805
6	Molla membrana	3241018
7	Membrana (N-V-T)	TKISM030N Neoprene TKISM030V Viton TKISM030T Bassa temperatura
8	Corpo valvola	1251350
9	Guarnizione O-R	3301276

DESCRIZIONE TS030(N-V-T)PWE / TS030(N-V-T)MWE

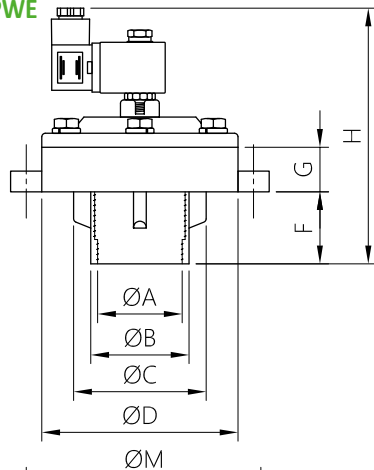
1	Bobina - Connettore	BH10 V## / V##
2	Viti - Rondelle	TKITVTE06X20X6
3	Gruppo pilota	1331080
4	Coperchio pilota	1251802
5	Coperchio remoto	1251805
6	Molla membrana	3241018
7	Membrana (N-V-T)	TKISM030N Neoprene TKISM030V Viton TKISM030T Bassa temperatura
8	Viti - Rondelle	TKITVTE06X20X2
9	Guarnizione O-R	1251370
10	Guarnizione O-R	3301276



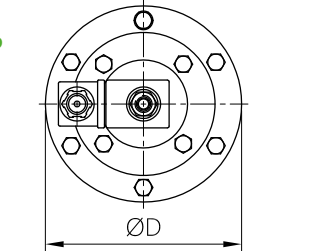
SERIE TS - Ø 1 ½" - DIMENSIONI D'INGOMBRO

**VALVOLE A MEMBRANA
PER SUPERFICI PIANE**

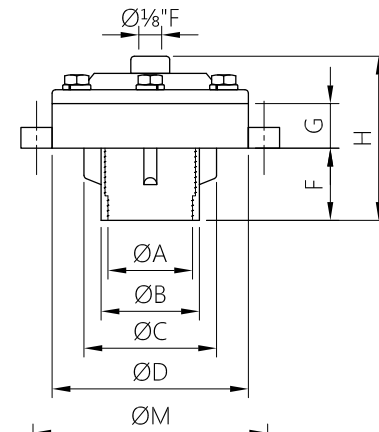
TS030(N-V-T)PWE



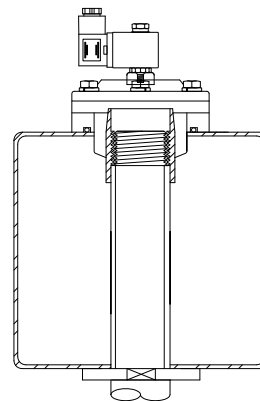
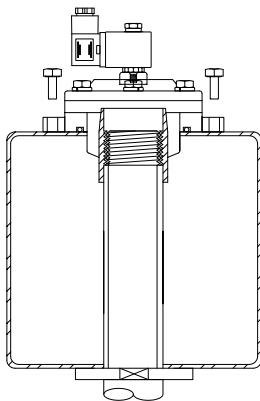
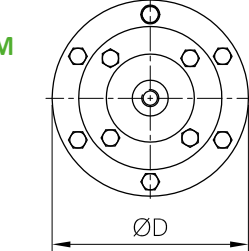
TS030(N-V-T)P



TS030(N-V-T)MWE



TS030(N-V-T)M



MODELLO	ØA	ØB	ØC	ØD	ØE	F	G	H	M	Peso (kg)
TS030(N-V-T)PWE	1 ½"	57	80.5	114	9	42	26	158	-	1.4
TS030(N-V-T)P	1 ½"	57	80.5	114	9	42	26	158	130	1.4
TS030(N-V-T)MWE	1 ½"	57	80.5	114	9	42	26	125	-	1.2
TS030(N-V-T)M	1 ½"	57	80.5	114	9	42	26	125	130	1.2