

## VALVOLE PER SUPERFICI PIANE - SERIE TS - Ø 1"

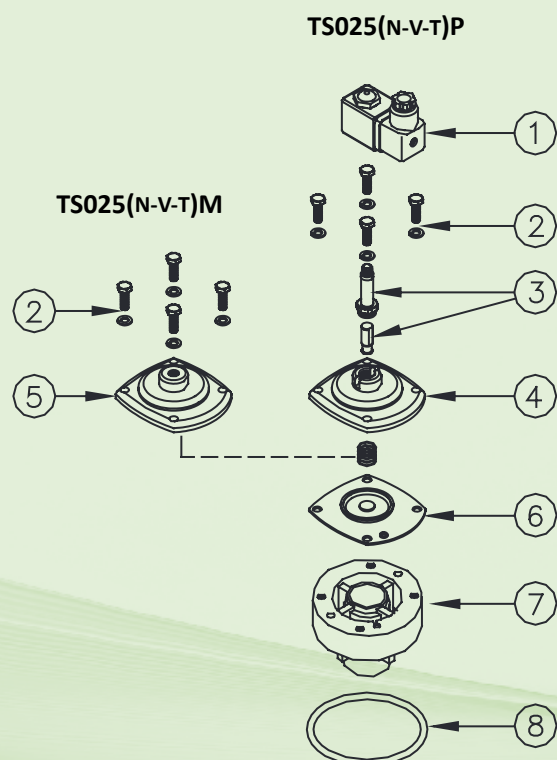


## CARATTERISTICHE

Fluidi	Aria filtrata non lubrificata
Temperatura esercizio	Membrana neoprene -20°C; +80°C Membrana viton -20°C; +200°C Membrana bassa T. -40°C; +80°C
Pressione esercizio	da 0,5 bar a 7,5 bar max
Corpo e coperchio	Alluminio pressofuso
Nucleo pilota	Acciaio inox
Viteria	Acciaio inox
Isolamento bobina	Classe H
Connettore	PG 9 EN175301-803
Protezione connettore + bobina	IP65 EN60529
Tensioni standard	24V/50-60Hz (±10%) 19VA 115V/50-60Hz (±10%) 19VA 230V/50-60Hz (±10%) 19VA 24VDC (± 10%) 18 Watt

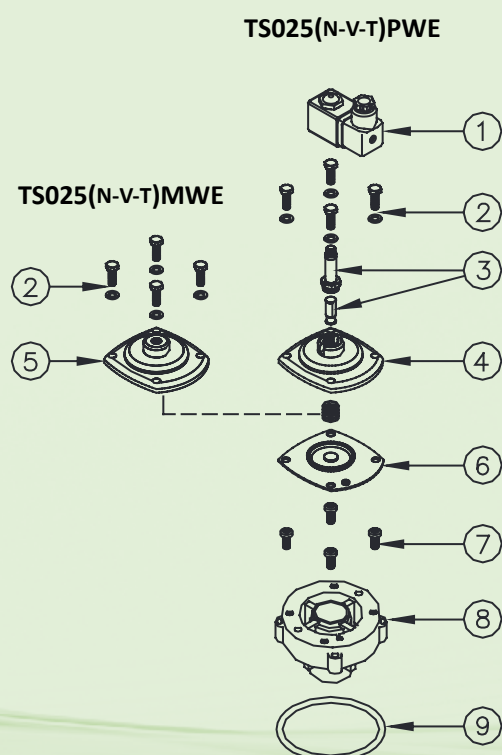
DESCRIZIONE	TS025(N-V-T)P / TS025(N-V-T)M
1 Bobina - Connettore	BH10 V## / V##
2 Viti - Rondelle	TKITVTE06X20X4
3 Gruppo pilota	1331080
4 Coperchio pilota	1251750
5 Coperchio remoto	1251770
6a Molla membrana	3241002
6 Membrana (N-V-T)	TKISM025N Neoprene TKISM025V Viton TKISM025T Bassa temperatura
7 Corpo valvola	1251290
8 Guarnizione O-R	3301285

TSP versione con pilota integrato / TSM versione con pilota remoto



DESCRIZIONE	TS025(N-V-T)PWE / TS025(N-V-T)MWE
1 Bobina - Connettore	BH10 V## / V##
2 Viti - Rondelle	TKITVTE06X20X4
3 Gruppo pilota	1331080
4 Coperchio pilota	1251750
5 Coperchio remoto	1251770
6a Molla membrana	3241002
6 Membrana (N-V-T)	TKISM025N Neoprene TKISM025V Viton TKISM025T Bassa temperatura
7 Viti - Rondelle	TKITVTE06X16X4
8 Guarnizione O-R	1251300
9 Guarnizione O-R	3301285

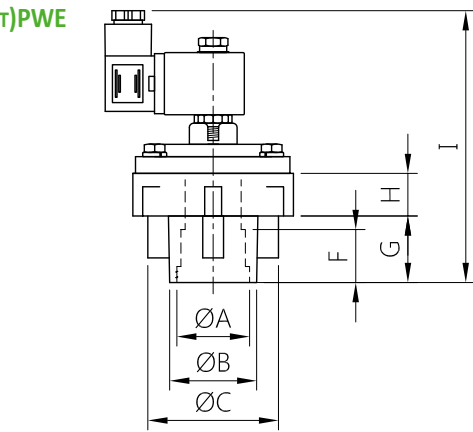
TSP versione con pilota integrato / TSM versione con pilota remoto



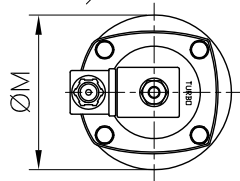
## SERIE TS - Ø 1" - DIMENSIONI D'INGOMBRO

**VALVOLE A MEMBRANA  
PER SUPERFICI PIANE**

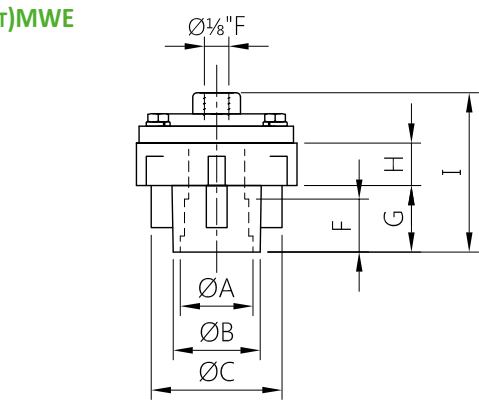
**TS025(N-V-T)PWE**



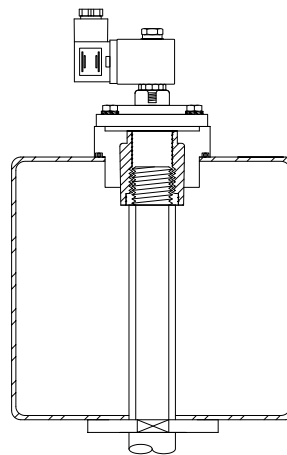
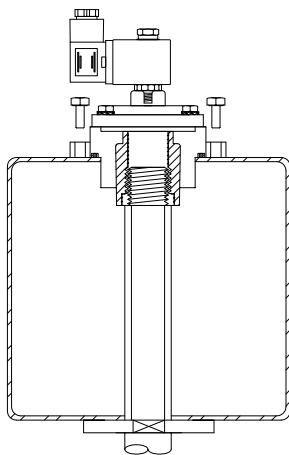
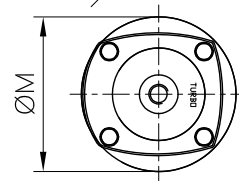
**TS025(N-V-T)P**



**TS025(N-V-T)MWE**



**TS025(N-V-T)M**



MODELLO	$\varnothing A$	$\varnothing B$	$\varnothing C$	$\varnothing D$	$\varnothing E$	$\varnothing M$	F	G	H	I	L	Peso (kg)
TS025(N-V-T)PWE	1"	41.4	62.2	104	116	92	25	31.5	20.2	136	6.2	0.7
TS025(N-V-T)P	1"	41.4	62.2	-	-	92	25	31.5	20.2	136	6.2	0.7
TS025(N-V-T)MWE	1"	41.4	62.2	104	116	92	25	31.5	20.2	78	6.2	0.5
TS025(N-V-T)M	1"	41.4	62.2	-	-	92	25	31.5	20.2	78	6.2	0.5