

VALVOLE FLANGIATE - SERIE TE - Ø 1" - 1 1/2"



TEP versione con pilota integrato
TEM versione con pilota remoto

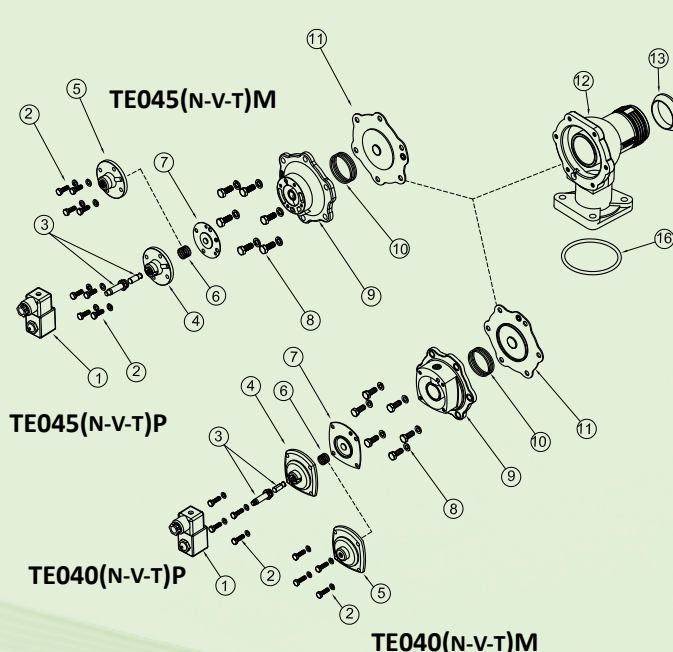
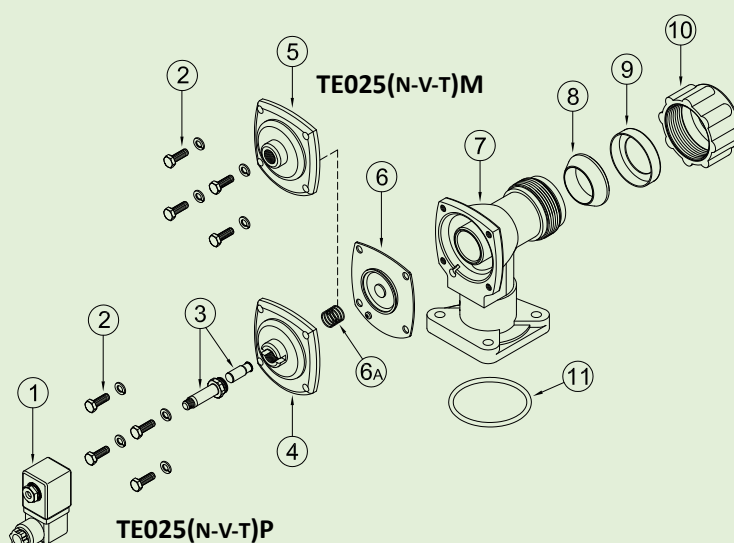
CARATTERISTICHE

Fluidi	Aria filtrata non lubrificata
Temperatura esercizio	Membrana neoprene -20°C; +80°C
	Membrana viton -20°C; +200°C
	Membrana bassa T. -40°C; +80°C
Pressione esercizio	da 0,5 bar a 7,5 bar max
Corpo e coperchio	Alluminio pressofuso
Nucleo pilota	Acciaio inox
Viteria	Acciaio inox
Isolamento bobina	Classe H
Connettore	PG 9 EN175301-803
Protezione connettore + bobina	IP65 EN60529
Tensioni standard	24V/50-60Hz (±10%) 19VA
	115V/50-60Hz (±10%) 19VA
	230V/50-60Hz (±10%) 19VA
	24VDC (± 10%) 18 Watt

DESCRIZIONE

TE025(N-V-T)P / TE025(N-V-T)M

1	Bobina - Connettore	BH10 V## / V##
2	Viti - Rondelle	TKITVTE06X18X4
3	Gruppo pilota	1331080
4	Coperchio pilota	1251752
5	Coperchio remoto	1251776
6a	Molla membrana	3241002
6	Membrana (N-V-T)	TKISM025N Neoprene
		TKISM025V Viton
		TKISM025T Bassa temperatura
7	Corpo valvola	1251280
8	Guarnizione conica	3301013
9	Ogiva	1321010
10	Dado alto serra tubo	1281045
11	Guarnizione O-R	3301271



DESCRIZIONE

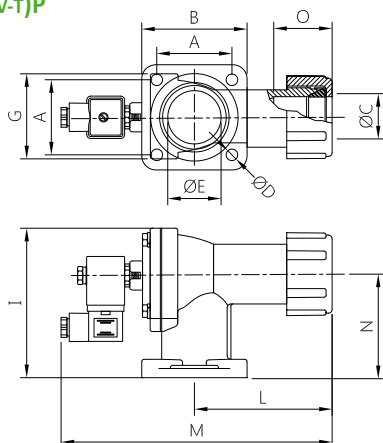
TE040(N-V-T)P
TE040(N-V-T)MTE045(N-V-T)P
TE045(N-V-T)M

1	Bobina - Connettore	BH10 V## / V##	BH10 V## / V##
2	Viti - Rondelle	TKITVTE06X20X4	TKITVTE06X18X4
3	Gruppo pilota	1331080	1331080
4	Coperchio pilota	1251750	1251715
5	Coperchio remoto	1251770	1251745
6	Membrana secondaria (N-V-T)	TKISM025N Neoprene	TKISM010N Neoprene
		TKISM025V Viton	TKISM010V Viton
		TKISM025T Bassa Temperatura	TKISM010T Bassa Temperatura
7	Molla membrana	3241002	3241006
8	Viti - Rondelle	TKITVTE08X20X6	TKITVTE08X20X6
9	Coperchio	1251620	1251640
10	Molla membrana	3241024	3241024
11	Membrana primaria (N-V-T)	TKISM040N Neoprene	TKISM045N Neoprene
		TKISM040V Viton	TKISM045V Viton
		TKISM040T Bassa Temperatura	TKISM045T Bassa Temperatura
12	Corpo valvola	1251430	1251430
13	Guarnizione conica	3301017	3301017
14	Ogiva	1321012	1321012
15	Dado alto serra tubo	1281050	1281050
16	Guarnizione O-R	3301281	3301281

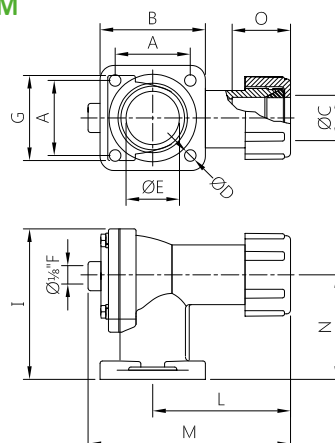
SERIE TE - Ø 1" - 1 ½" - DIMENSIONI D'INGOMBRO

VALVOLE A MEMBRANA
FLANGIATE

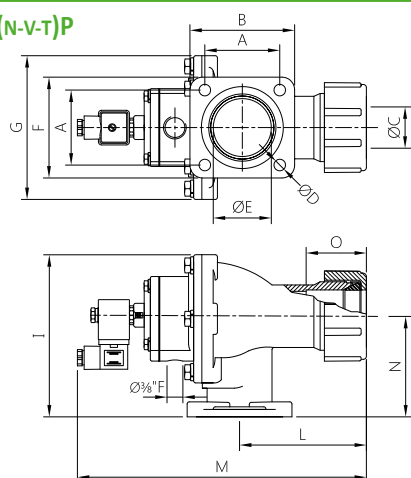
TE025(N-V-T)P



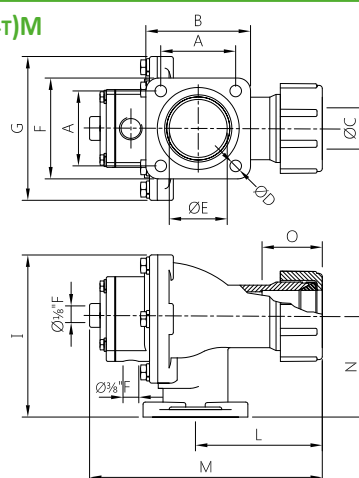
TE025(N-V-T)M



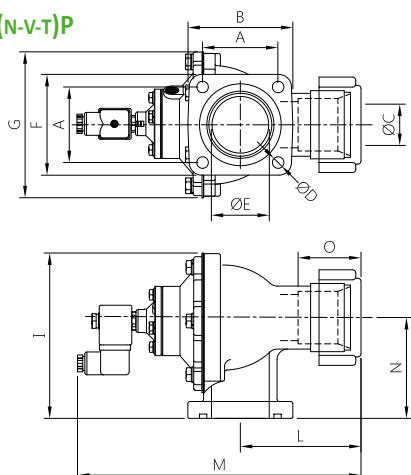
TE040(N-V-T)P



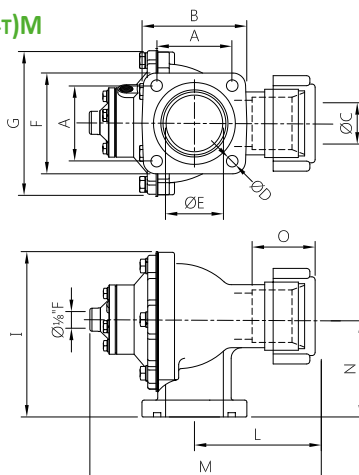
TE040(N-V-T)M



TE045(N-V-T)P



TE045(N-V-T)M



MODELLO	Ø L (nom)	A	B	Ø D	F	G	I	L	M	N	Ø E	Peso (kg)
TE025(N-V-T)P	1"	60	82	9	82	74	119	106	217	81	1 ½"	1
TE040(N-V-T)P	1 ½"	72	99	11	96	140	160	115	278	96	2"	2.3
TE045(N-V-T)P	1 ½"	72	99	11	96	140	160	115	270	96	2"	2.3
TE025(N-V-T)M	1"	60	82	9	82	74	119	106	159	81	1 ½"	0.9
TE040(N-V-T)M	1 ½"	72	99	11	96	140	160	115	220	96	2"	2.1
TE045(N-V-T)M	1 ½"	72	99	11	96	140	160	115	214	96	2"	2.1