

## VALVOLE CON ATTACCHI RAPIDI - SERIE TD - Ø ¾" - 1" - 1 ½"



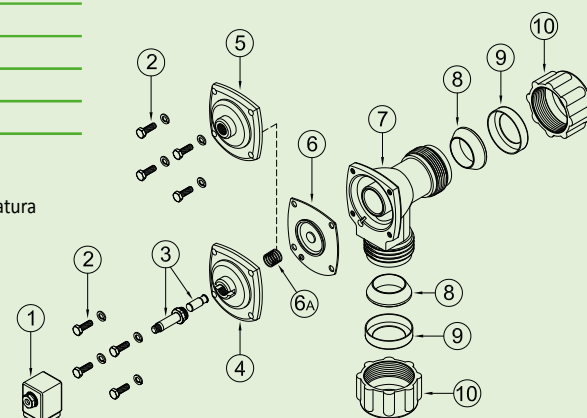
## CARATTERISTICHE

Fluidi	Aria filtrata non lubrificata
Temperatura esercizio	Membrana neoprene -20°C; +80°C Membrana viton -20°C; +200°C Membrana bassa T. -40°C; +80°C
Pressione esercizio	da 0,5 bar a 7,5 bar max
Corpo e coperchio	Alluminio pressofuso
Nucleo pilota	Acciaio inox
Viteria	Acciaio inox
Isolamento bobina	Classe H
Connettore	PG 9 EN175301-803
Protezione connettore + bobina	IP65 EN60529
Tensioni standard	24V/50-60Hz (±10%) 19VA 115V/50-60Hz (±10%) 19VA 230V/50-60Hz (±10%) 19VA 24VDC (± 10%) 18 Watt

DESCRIZIONE	TD020(N-V-T)P / TD020(N-V-T)M	TD025(N-V-T)P / TD025(N-V-T)M
<b>1</b> Bobina - Connettore	BH10 V## / V##	BH10 V## / V##
<b>2</b> Viti - Rondelle	TKITVTE06X18X4	TKITVTE06X18X4
<b>3</b> Gruppo pilota	1331080	1331080
<b>4</b> Coperchio pilota	1251750	1251750
<b>5</b> Coperchio remoto	1251770	1251770
<b>6</b> Membrana (N-V-T)	TKISM025N Neoprene TKISM025V Viton TKISM025T Bassa Temperatura	TKISM025N Neoprene TKISM025V Viton TKISM025T Bassa Temperatura
<b>6a</b> Molla membrana	3241002	3241002
<b>7</b> Corpo valvola	1251110	1251310
<b>8</b> Guarnizione conica	3301010	3301013
<b>9</b> Ogiva	1321006	1321010
<b>10</b> Dado alto serra tubo	1281040	1281045

TDP versione con pilota integrato

TDM versione con pilota remoto

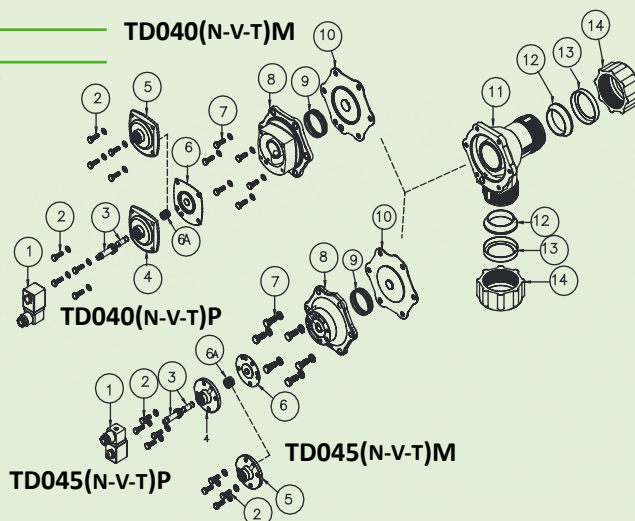
TD020(N-V-T)M  
TD025(N-V-T)MTD020(N-V-T)P  
TD025(N-V-T)P

DESCRIZIONE	TD040(N-V-T)P / TD040(N-V-T)M	TD045(N-V-T)P / TD045(N-V-T)M
<b>1</b> Bobina - Connettore	BH10 V## / V##	BH10 V## / V##
<b>2</b> Viti - Rondelle	TKITVTE06X20X4	TKITVTE06X18X4
<b>3</b> Gruppo pilota	1331080	1331080
<b>4</b> Coperchio pilota	1251750	1251715
<b>5</b> Coperchio remoto	1251770	1251745
<b>6</b> Membrana secondaria (N-V-T)	TKISM025N Neoprene TKISM025V Viton TKISM025T Bassa Temperatura	TKISM010N Neoprene TKISM010V Viton TKISM010T Bassa Temperatura
<b>6a</b> Molla Membrana	3241002	3241002
<b>7</b> Viti - Rondelle	TKITVTE08X20X6	TKITVTE08X20X6
<b>8</b> Coperchio	1251620	1251640
<b>9</b> Molla Membrana	3241024	3241024
<b>10</b> Membrana primaria (N-V-T)	TKISM040N Neoprene TKISM040V Viton TKISM040T Bassa Temperatura	TKISM045N Neoprene TKISM045V Viton TKISM045T Bassa Temperatura
<b>11</b> Corpo valvola	1251440	1251440
<b>12</b> Guarnizione conica	3301017	3301017
<b>13</b> Ogiva	1321012	1321012
<b>14</b> Dado alto serra tubo	1281050	1281050

TDP versione con pilota integrato

TDM versione con pilota remoto

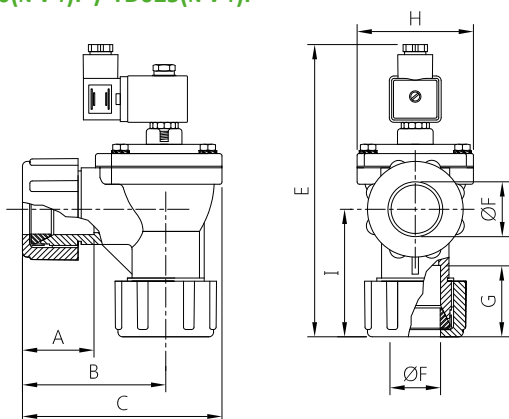
## TD040(N-V-T)M

TD040(N-V-T)P  
TD045(N-V-T)P

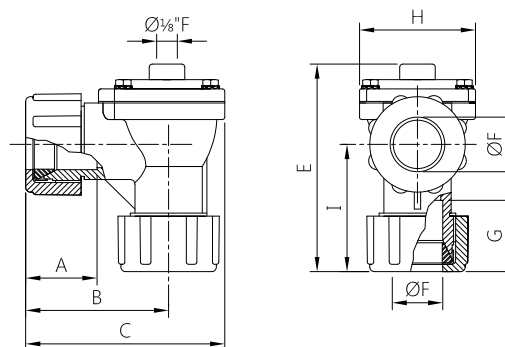
# SERIE TD - $\varnothing \frac{3}{4}"$ - 1" - 1 $\frac{1}{2}"$ - DIMENSIONI D'INGOMBRO

**VALVOLE A MEMBRANA  
CON ATTACCHI RAPIDI**

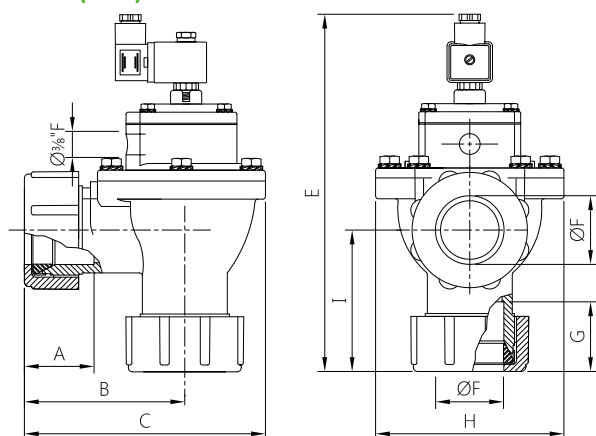
**TD020(N-V-T)P / TD025(N-V-T)P**



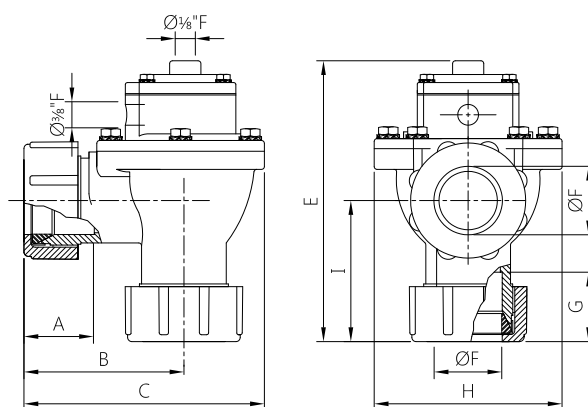
**TD020(N-V-T)M / TD025(N-V-T)M**



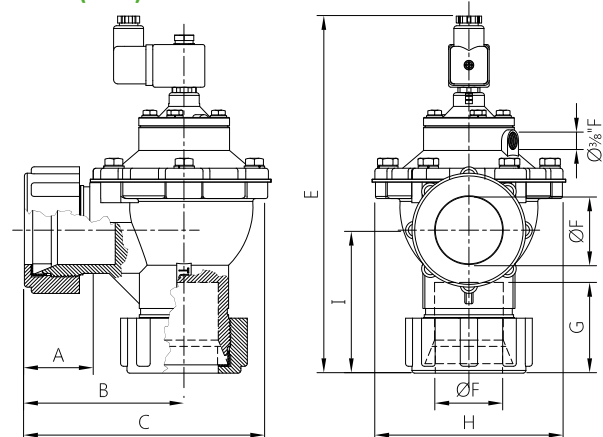
**TD040(N-V-T)P**



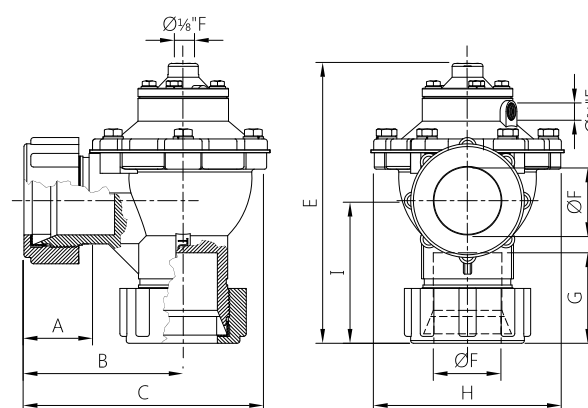
**TD040(N-V-T)M**



**TD045(N-V-T)P**



**TD045(N-V-T)M**



Le quote A, B, C, variano con lo schiacciamento della guarnizione conica

MODELLO	Ø L (nom)	A	B	C	E	Ø F	G	H	I	Peso (kg)
TD020(N-V-T)P	$\frac{3}{4}"$	48	90	128	~189	28.5	48	74	80	1.1
TD025(N-V-T)P	1"	48	90	128	~189	35	48	74	80	1
TD040(N-V-T)P	1 $\frac{1}{2}"$	66	114	180	~264	50	66	140	101	2.5
TD045(N-V-T)P	1 $\frac{1}{2}"$	66	114	180	~260	50	66	140	101	2.5
TD020(N-V-T)M	$\frac{3}{4}"$	48	90	128	~131	28.5	48	74	80	1.1
TD025(N-V-T)M	1"	48	90	128	~131	35	48	74	80	0.9
TD040(N-V-T)M	1 $\frac{1}{2}"$	66	114	180	~206	50	66	140	101	2.3
TD045(N-V-T)M	1 $\frac{1}{2}"$	66	114	180	~204	50	66	140	101	2.3